

8 Stokes Close Copthorne Keep Shrewsbury Shropshire SY3 8FA



3 Bedroom House - Semi-Detached
£1,100 PCM

The features

- BRAND NEW THREE BEDROOM HOME
- ENTRANCE HALL WITH CLOAKROOM
- LIVING/DINING ROOM
- TWO FURTHER BEDROOMS
- ENCLOSED REAR GARDEN AND DRIVEWAY PARKING
- GAS CENTRAL HEATING AND DOUBLE GLAZING
- FITTED KITCHEN WITH APPLIANCES
- PRINCIPAL BEDROOM WITH ENSUITE
- FAMILY BATHROOM
- EPC RATING B



****COMING SOON, A BRAND NEW THREE BEDROOM SEMI DETACHED HOME****

Set in a superb location within walking distance of Shrewsbury Town Centre this brand new home must be viewed to be fully appreciated. Reception Hall with Cloakroom, light and airy Lounge/Dining Room, Kitchen with oven, hob, dishwasher and fridge/freezer, Principal bedroom with En Suite, Two Further Bedrooms. Featuring gas central heating, double glazing, allocated parking and enclosed rear garden.

Property details

ENTRANCE HALL

CLOAKROOM

KITCHEN

LIVING/DINING ROOM

STAIRS AND LANDING

PRINCIPAL BEDROOM

EN SUITE

BEDROOM 2

BEDROOM 3

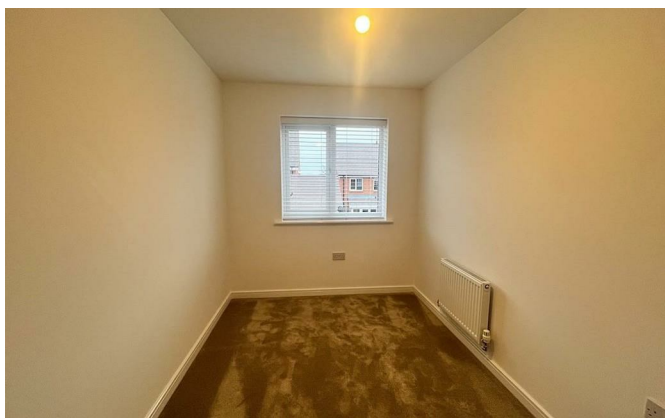
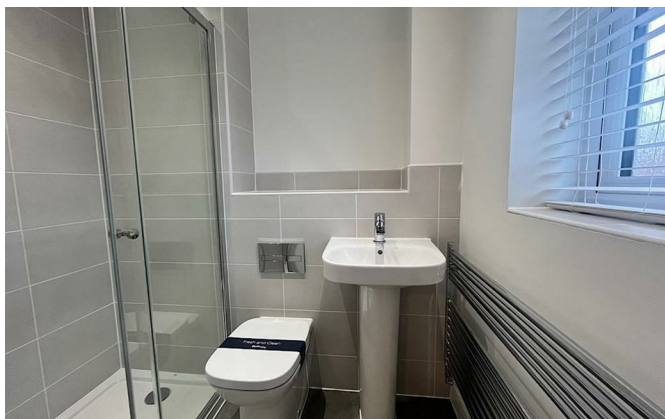
FAMILY BATHROOM

GARDEN AND OUTSIDE

With driveway parking. The property benefits from enclosed rear garden laid to lawn

8 Stokes Close Copthorne Keep, Shrewsbury, Shropshire, SY3 8FA.

3 Bedroom House - Semi-Detached
£1,100 PCM





Judy Bourne

Director at Monks

judy@monks.co.uk

Get in touch

Call. 01743 361422

Email. info@monks.co.uk

Click. www.monks.co.uk

Shrewsbury office

10a-11 Shoplatch,
Shrewsbury, Shropshire, SY1

We're available 7 days a week

HOME – four words that define who,
and what we are:

Honest, Original, Motivated, Empathetic

Energy Efficiency Rating		
	Current	Potential
Very energy efficient - lower running costs		
(92 plus) A		95
(81-91) B	84	
(69-80) C		
(55-68) D		
(39-54) E		
(21-38) F		
(1-20) G		
Not energy efficient - higher running costs		
England & Wales	EU Directive 2002/91/EC	

Environmental Impact (CO ₂) Rating		
	Current	Potential
Very environmentally friendly - lower CO ₂ emissions		
(92 plus) A		
(81-91) B		
(69-80) C		
(55-68) D		
(39-54) E		
(21-38) F		
(1-20) G		
Not environmentally friendly - higher CO ₂ emissions		
England & Wales	EU Directive 2002/91/EC	

Monks for themselves and for the vendors of this property, whose agents they are give notice that:

- These particulars provide a general outline only for the guidance of intended purchasers and do not constitute part of an offer or contract.
- All descriptions, dimensions and distances are approximate, references to state and condition, relevant permissions for use and occupation and other details are provided in good faith and believed to be correct.
- No person in the employment of Monks has any authority to make or give any representation or warranty whatever in relation to this property.
- Electrics and other appliances mentioned in these particulars have not been tested by Monks. Therefore prospective purchasers must satisfy themselves as to their working order.